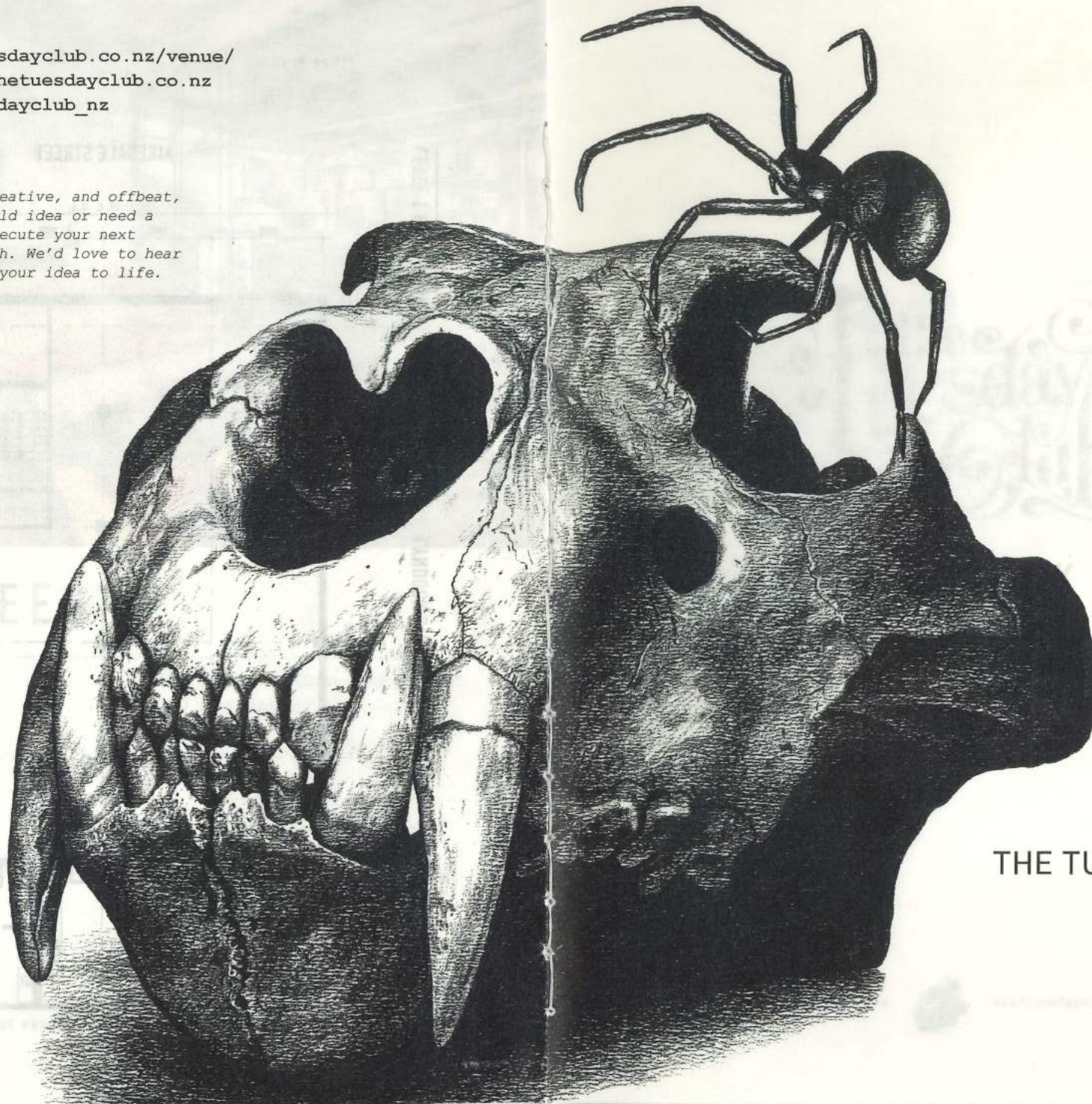


Website: thetuesdayclub.co.nz/venue/

Email: events@thetuesdayclub.co.nz

Insta: [@thetuesdayclub_nz](https://www.instagram.com/thetuesdayclub_nz)

*We love the fun, creative, and offbeat,
so if you have a wild idea or need a
perfect place to execute your next
vision, get in touch. We'd love to hear
from you and bring your idea to life.*



THE TUESDAY CLUB

VENUE PACK

CONTENT

The Tuesday Club

VENUE PACK



VENUE	DATE	TIME
THE BARRICADE	10-11	19-20
THE BARRICADE	11-12	20-21
THE BARRICADE	12-13	21-22
THE BARRICADE	13-14	22-23
THE BARRICADE	14-15	23-24
THE BARRICADE	15-16	24-25
THE BARRICADE	16-17	25-26
THE BARRICADE	17-18	26-27
THE BARRICADE	18-19	27-28
THE BARRICADE	19-20	28-29
THE BARRICADE	20-21	29-30
THE BARRICADE	21-22	30-31

@thetuesdayclub_nz



thetuesdayclub.co.nz

CONTENT



THE TUESDAY CLUB

- 04-05 Content
- 06-07 Entrance Map
- 08-11 About us



THE GALLERY

- 12-13 The Gallery
- 14-15 Cool Stuff
- 16-18 Things we have



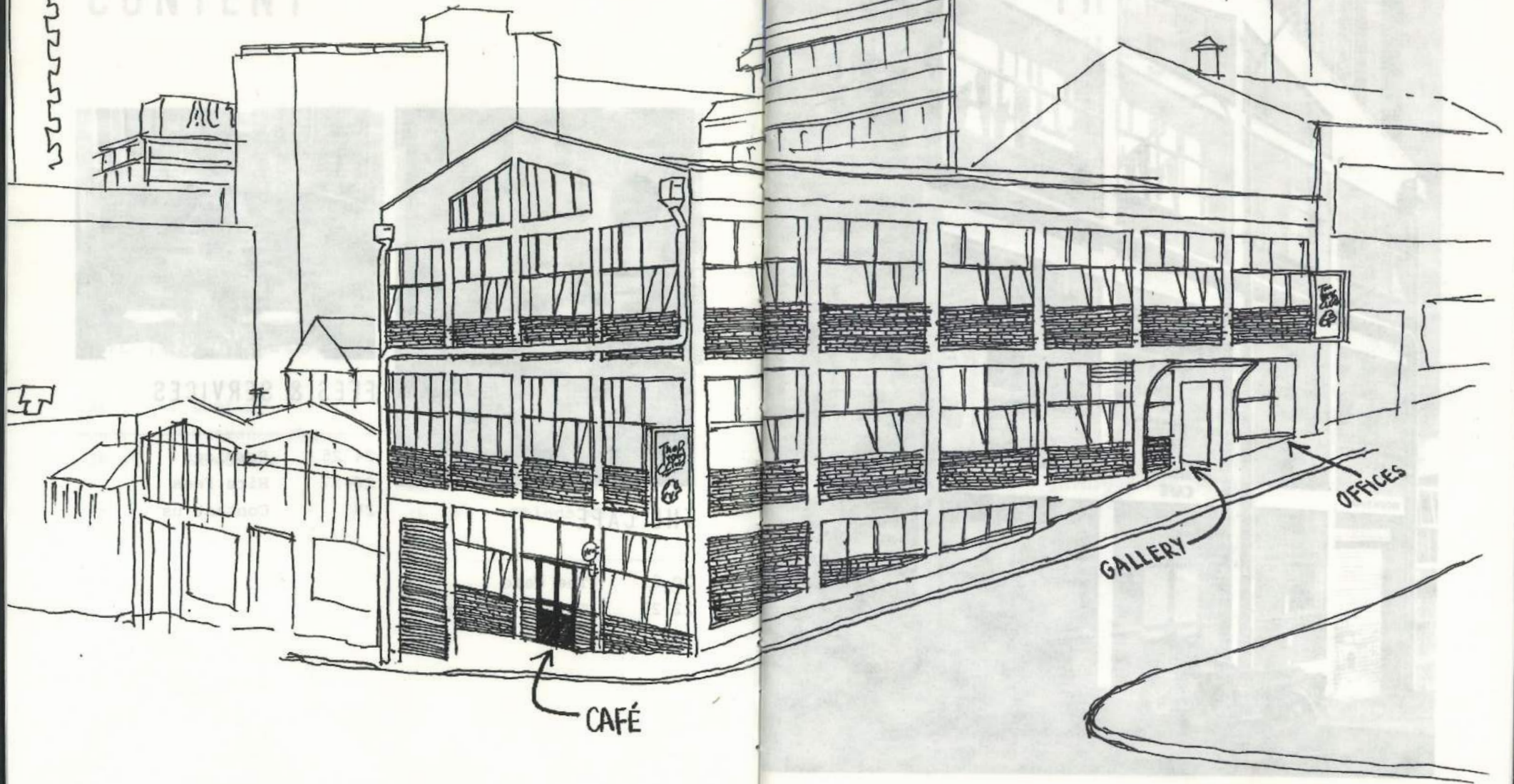
THE CAFE

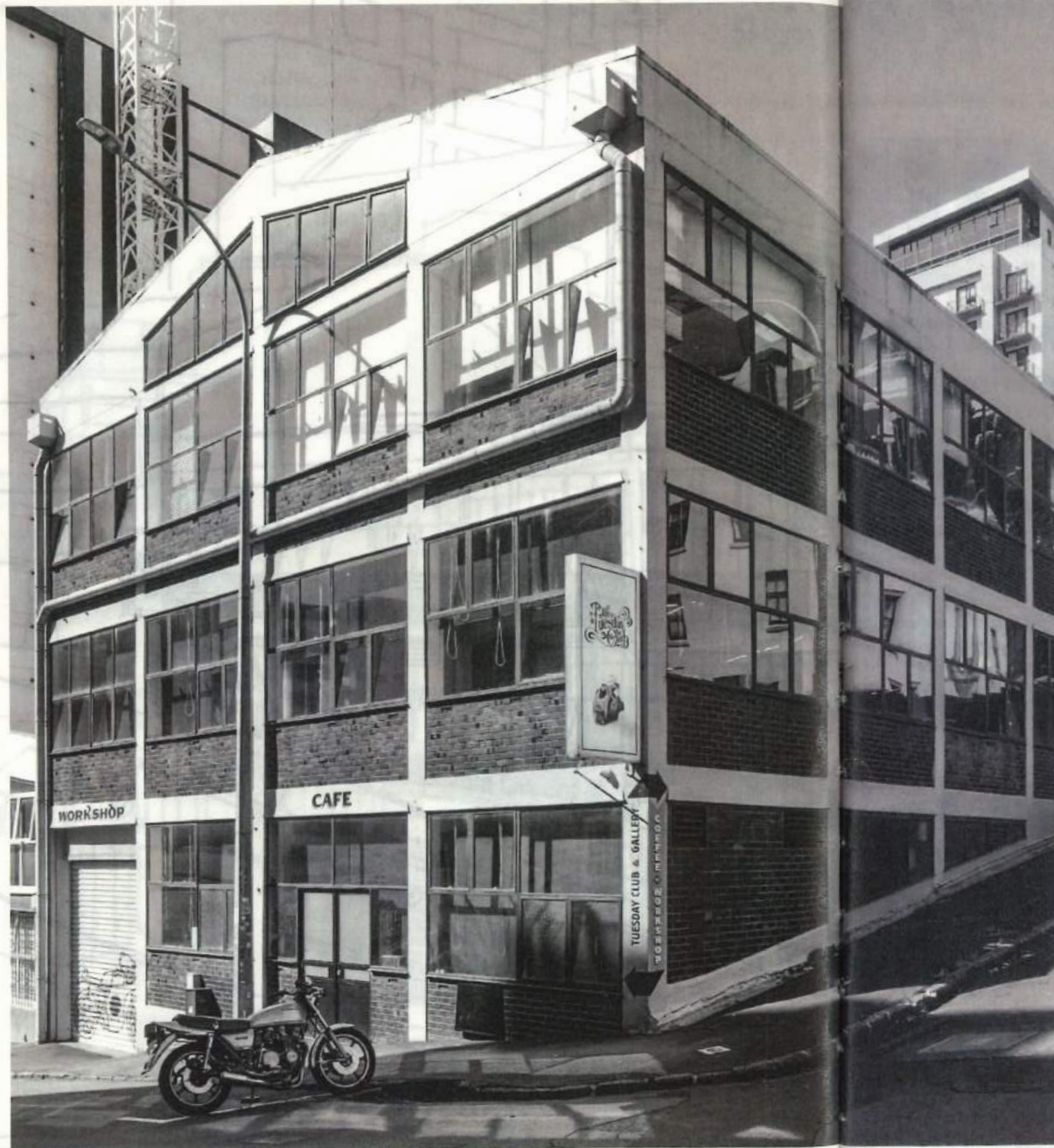
- 20-21 The Cafe
- 22-23 Things we have



FEES & SERVICES

- 24-25 Services
- 26-27 Hire Fees
- 28 Contact us





THE TUESDAY CLUB

We often get asked what we are, and the truth is, we are many things. But what we believe in is simple. We believe in creativity, community and culture, and any way we can get involved and get behind cool stuff, we're there.



Located in the heart of the CBD, our space is comprised of 3 floors of raw potential. On the bottom floor sits our cafe and workshop space where you can make and eat stuff, on the middle floor is our gallery space; a large blank canvas where you can host and do cool stuff, and on the top floor is where our projects, media suite and office space live, it's where we do brain stuff.



THE GALLERY

AT A GLANCE:

- 250m²
- Blank canvas space
- 100 capacity
- 8 movable walls
- Street access
- 3-phase power

Enter through a roller door into the open-plan space and you'll find polished concrete floors, classic white pillars, steel-framed windows, and an abundance of natural light. The space has easy off-street access, a fully functioning kitchenette and comes fitted with all the power your AV supplier could possibly need.

**COME
DO
COOL
STUFF**



DO SHOOT STUFF



DO ART STUFF



DO BUSINESS STUFF



DO MUSIC STUFF



GLOW
LAB

NATURE + SCIENCE

GL
LA

NATURE

DO PR STUFF



DO DINING STUFF



DO WEDDING STUFF

DO COOL STUFF AT
THE TUESDAY CLUB





THINGS WE HAVE

- Venue Manager with over 20 years of experience who can assist with planning, staffing and all year event needs
- 8 moveable walls (4 walls at 2.4 x 2.39m and 4 walls at 3.15 x 2.39m)
- 6 bar leaners, 1 large black table, 12 chairs
- 3-phase power, 75" screen, speaker and wireless mic
- Kitchenette with fridge freezer, dishwasher, sink, microwave, kettle
- Street access, roller door entrance 2.12H x 0.8W, wheelchair-accessible
- 2 air-conditioning units (heating/cooling)
- 4 toilets (1x wheelchair-accessible)
- Separate Green Room available upon request



**GREAT THINGS
START WITH A
BLANK CANVAS**



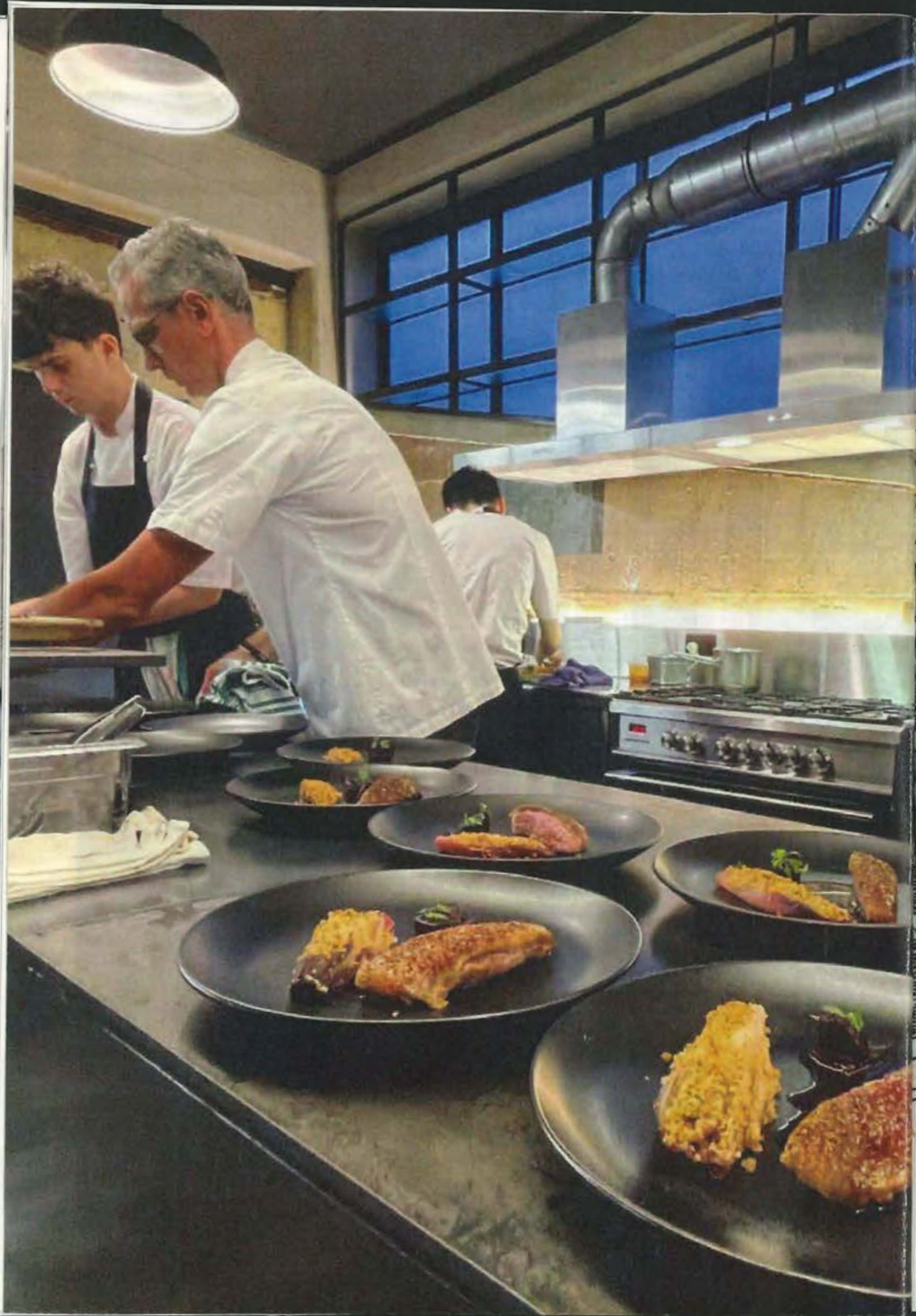
THE CAFE

AT A GLANCE:

- 100m²
- Industrial and brick style space
- 50 capacity
- Commercial kitchen

Nestled in front of our motorbike and classes workshop on the ground floor sits The Tuesday Club Cafe. With soft velvet seating and a large zinc-topped dining table, our cafe offers the perfect space to host any event, whether it be an intimate dinner, cocktail party, product launch, art show or cosy gig.

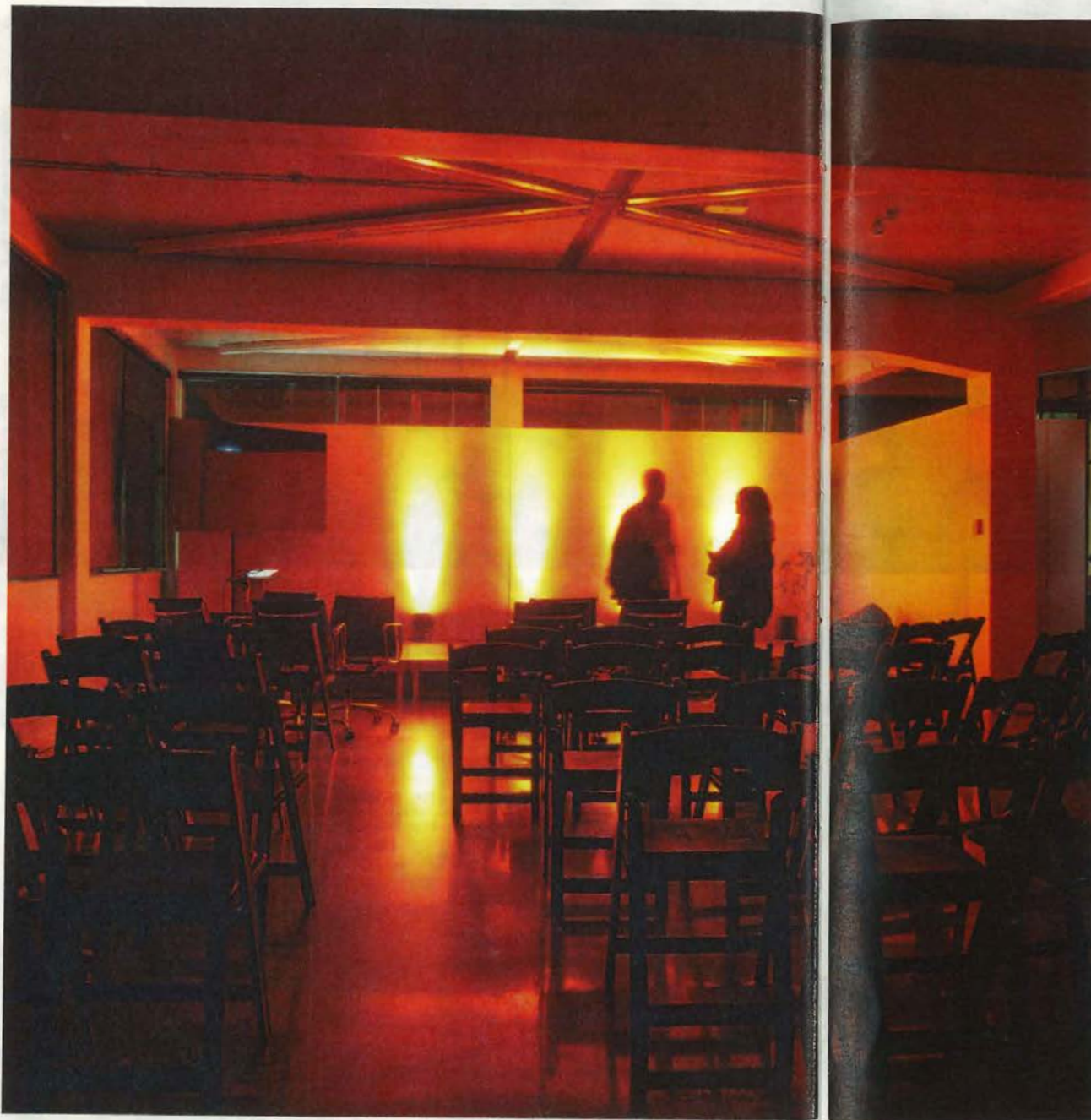
Fitted with a commercial kitchen, it's also ideal for your chefs to cook and cater for larger functions in the gallery above.



THINGS WE HAVE

- 1 Oven
- 2 Fridges
- 1 Dishwasher
- 1 Coffee machine
- 1 Large zinc table
- 1 Curved velvet booth and table
- 15 Velvet stools
- 1 Couch
- 2 Arm chairs
- 1 Air-conditioning unit (heating/cooling)
- 1 Toilet

Double door entrance (wheelchair-accessible)



FEES & SERVICES

The Tuesday Club is a dry hire and BYO venue. We have an experienced Venue Manager and a trusted network of preferred suppliers available should you require additional event support.

You're welcome to bring in your own catering and suppliers at no extra charge, or lean on us to help source catering, staff, lighting, sound, and anything else you might need. We're flexible and happy to work with you to build the right team for your event. If you'd like help with any of the above, just let us know and we can talk through options.



HIRE FEES

Gallery Hire
(Standard rate)

\$1500 per day (Sun-Thurs) and
\$2000 per day (Fri & Sat).

Cafe Hire
(Standard rate)

\$1000 from 3pm onwards and
\$2500 full day (if the cafe
needs to close). If you have
booked the gallery, the cafe
can be hired for \$500/day
(after 3pm).

WE AIM TO MAKE THE SPACE ACCESSIBLE FOR OUR CREATIVE COMMUNITY SO DISCOUNTS MAY BE AVAILABLE BASED ON THE PROJECT.

LEVEL 1 FLOORPLAN

LYNDOCK STREET

AIREDALE STREET

